

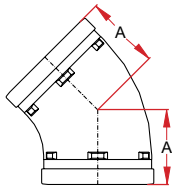
FITTINGS / Style 64 - 65 - 66 SHORT RADIUS

GROOVED-END FITTINGS

Maximum working pressure: 34.5 bar
For fire protection equipment and approved pressure ratings please contact Modgal.

STYLE 64

Elbow 45° / Bogen 45° / Bocht 45°

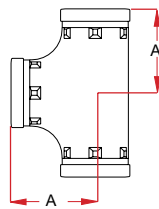


FITTINGS MIT GERIEFTEN ANSCHLUSS

Maximaler Betriebsdruck: 34.5 bar
Die Brandschutzzulassungen und die Zulassungs-nenn-drücke erhalten Sie bei Modgal.

STYLE 65

Equal Tee / T-Stück / Tee

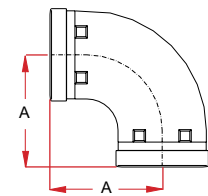


GEGROEFDE FITTINGEN

Maximale werkdrök: 34.5 bar
Contacteer Modgal voor toegelaten druk-klassen voor brandbeveiligingstoepassingen.

STYLE 66

Elbow 90° / Bogen 90° / Bocht 90°



Nominal Size (Inches / DN)	Pipe Outside Diameter	Dimen- sion	Weight Kg.	Approvals
		A		
1" / 25	33.7	-	-	-
1¼" / 32	42.4	44.5	0.30	FM / UL LPCB / VDS
1½" / 40	48.3	44.5	0.36	FM / UL LPCB / VDS
2" / 50	60.3	51.0	0.51	FM / UL LPCB / VDS
2½" / 65	76.1	57.0	0.86	FM / UL LPCB / VDS
3" / 80	88.9	63.5	1.16	FM / UL LPCB / VDS
4" OD	108.0	76.0	1.65	VDS
4" / 100	114.3	76.0	1.85	FM / UL LPCB / VDS
5" OD	133.0	82.5	2.77	-
5" / 125	139.7	82.2	3.12	FM / UL LPCB / VDS
6" OD	159.0	90.0	3.76	VDS
6" OD	165.1	89.0	4.10	FM / UL LPCB
6" / 150	168.3	89.0	3.90	FM / UL LPCB / VDS
8" / 200	219.1	108.0	7.60	FM / UL VDS
10" / 250	273.0	120.0	16.65	FM / UL VDS
12" / 300	323.9	133.0	23.50	FM / UL VDS
14" / 350	355.6	-	-	-
16" / 400	406.4	-	-	-

For use with higher than stated maximum working pressure, please contact Modgal Metal.

Nominal Size (Inches / DN)	Pipe Outside Diameter	Dimen- sion	Weight Kg.	Approvals
		A		
1" / 25	33.7	58.0	0.36	LPCB / VDS
1¼" / 32	42.4	70.0	0.66	FM / LPCB VDS
1½" / 40	48.3	70.0	0.75	FM / LPCB VDS
2" / 50	60.3	70.0	0.90	FM / UL LPCB / VDS
2½" / 65	76.1	76.0	1.35	FM / UL LPCB / VDS
3" / 80	88.9	85.5	1.80	FM / UL LPCB / VDS
4" OD	108.0	101.0	2.70	VDS
4" / 100	114.3	101.0	2.65	FM / UL LPCB / VDS
5" OD	133.0	-	-	-
5" / 125	139.7	124.0	5.0	FM / UL LPCB / VDS
6" OD	159.0	140.0	6.88	VDS
6" OD	165.1	140.0	8.23	FM / UL LPCB / VDS
6" / 150	168.3	140.0	7.26	FM / UL LPCB / VDS
8" / 200	219.1	174.0	13.63	FM / UL LPCB / VDS
10" / 250	273.0	-	-	-
12" / 300	323.9	-	-	-
14" / 350	355.6	-	-	-
16" / 400	406.4	-	-	-

Für den Einsatz mit höheren Drücken, als dem angegebenen maximalen Betriebsdruck, kontaktieren Sie bitte Modgal Metal.

Nominal Size (Inches / DN)	Pipe Outside Diameter	Dimen- sion	Weight Kg.	Approvals
		A		
1" / 25	33.7	58.0	0.26	LPCB / VDS
1¼" / 32	42.4	70.0	0.42	FM / LPCB VDS
1½" / 40	48.3	70.0	0.51	FM / LPCB VDS
2" / 50	60.3	70.0	0.59	FM / UL LPCB / VDS
2½" / 65	76.1	76.0	0.91	FM / UL LPCB / VDS
3" / 80	88.9	85.5	1.25	FM / UL LPCB / VDS
4" OD	108.0	101.0	2.60	VDS
4" / 100	114.3	101.0	2.18	FM / UL LPCB / VDS
5" OD	133.0	-	-	-
5" / 125	139.7	124.0	4.0	FM / UL LPCB / VDS
6" OD	159.0	140.0	5.70	VDS
6" OD	165.1	140.0	5.2	FM / UL LPCB / VDS
6" / 150	168.3	140.0	5.13	FM / UL LPCB / VDS
8" / 200	219.1	165.0	8.3	FM / UL LPCB / VDS
10" / 250	273.0	-	-	-
12" / 300	323.9	-	-	-
14" / 350	355.6	-	-	-
16" / 400	406.4	-	-	-

Voor gebruik met hogere dan aangegeven maximale werkdrök, neem a.u.b. contact op met Modgal Metal.